



CORAL[®]
GROUP
Real Estate & Infrastructure
Project Developers

Corporate Office : Coral Castle, E-92, Subhash Marg, C-Scheme, Jaipur
Ph : +91 141 2222153, 2222156, 2221747 E - Mail : marketing@coralgroup.co.in

Our Presence : JAIPUR | JODHPUR | BIKANER | UDAIPUR | ALWAR | NEEMRANA | PUNE

www.coralgroup.co.in

Customer Care No. : 1800-200-5812

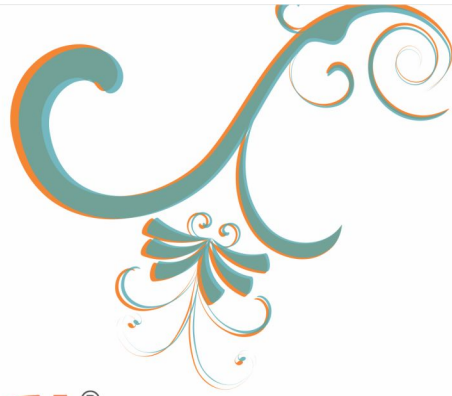
SMS Coral To  56767

Timeless Elegance in Style, Taste & Manner

Designed by  Miti

CORAL
EVOQ

LIVE LIFE KING SIZE
2 & 3 BHK Premium Apartments



CORAL[®] EVOQ

LIVE LIFE KING SIZE

Coral Group welcomes you to Coral Evoq, the Ultra-Luxury Apartments, perfectly located at Jagatpura, an address of the 'New Jaipur'.

Homes so crafted to be pieces of art. Right from the beckoning entrance, to the exceptional amenities and serene surroundings, the dream homes are to be treasured as master pieces. Blending the modern designs with the best of contemporary comforts, these homes are just to be owned!

Coral Evoq,
for those who have an eye for Design and Aesthetics!
DREAM HOME FOR YOU !



**CORAL[®]
GROUP**
Real Estate & Infrastructure
Project Developers

Treat yourself to a **Luxurious Experience**
in an Ambience of **Premium Elegance.**



Elegance of
Aesthetically Designed Interiors



Interiors for your own beautiful world!

Luxuriously elegant living spaces so well designed for your privacy and artful sumptuousness conveying Magnificence, Elegance, and Richness. The rooms are immaculate, with pretty furnishings and grand interiors. The Elegance and Sophistication here make a definite style statement.



Timeless Elegance & Well Crafted Comfort





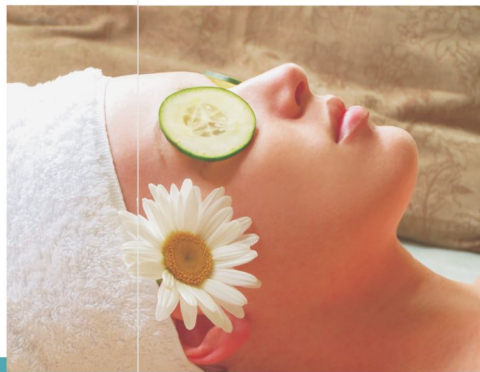
Lavish Lifestyle

for Mind, Body and Soul



It begins the moment you step into this architecturally striking high-rise edifice. Equally enamoring are the artful selection of amenities, created for the highest levels of comfort and utility.

Personal convenience and aesthetics tantalize the mind. Lush green natural surrounding is the perfect setting for the 'HOME' we all cherish.



CLUB HOUSE

Steam & Sauna • Chess Room • Indoor Games • Gymnasium • Lush Green Gardens

BUILDING FEATURES

- Smart Building design
- Architecturally Well crafted spaces
- Imposingly designed Entrance Lobby
- Club house
- Dedicated Parking Area
- Rainwater Harvesting Systems
- Earthquake resistant Structures
- High Speed Elevators



BATHROOM AND TOILETS

- Anti Skid Ceramic Flooring
- 7 ft high Designer Tile Cover
- International Standard Sanitary and CP Fittings

ELECTRICAL

- Concealed Copper Wiring
- Indoor MCB Unit
- Washing Machine Point
- AC Points in all rooms
- Adequate light point with Modular Switches



SECURITY

- 24x7 Security
- Visitor Entry through Smart Cards only
- Fully Equipped Fire fighting systems
- Protected on all sides by unscalable walls

SPECIFICATIONS

INDOOR SPECIFICATIONS

- Naturally lit and well ventilated Rooms
- Vitrified Tiles Flooring in Living, Dining & Kitchen
- Ceramic Flooring in Utilities and Balconies
- UPVC / Aluminum Flush Doors
- Flush Doors and
- Flush Doors and
- Smooth POP finish with premium Distemper
- Provision for Broadband Internet Connectivity



KITCHEN

- Granite Platform with Single Bowl
- Stainless Steel Sink
- 2 ft high Glazed Tile Cover above the Platform

UTILITIES

- 100% Power Back Up for Common Areas & Elevators
- Name Plaque and Private Mail Boxes

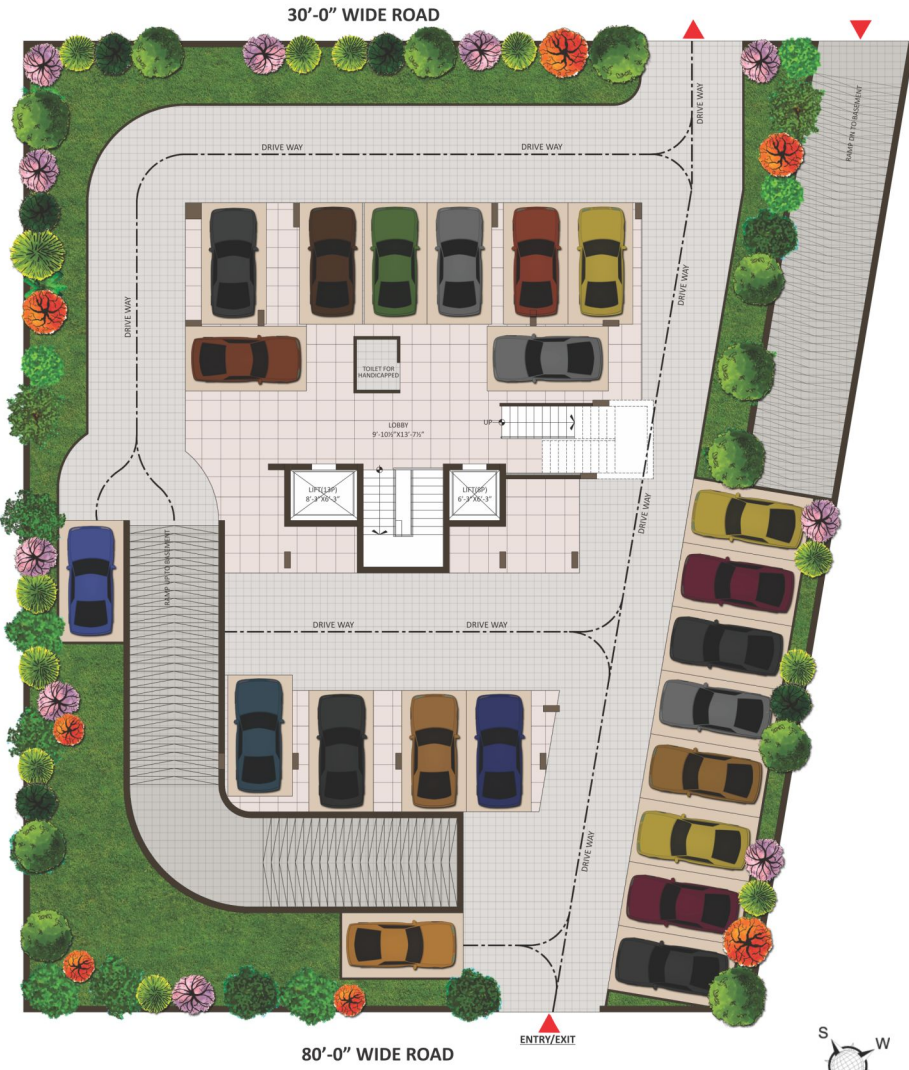
CORAL
EVOQ

LIVE LIFE KING SIZE
2 & 3 BHK PREMIUM APPARTMENTS



STILT FLOOR PLAN

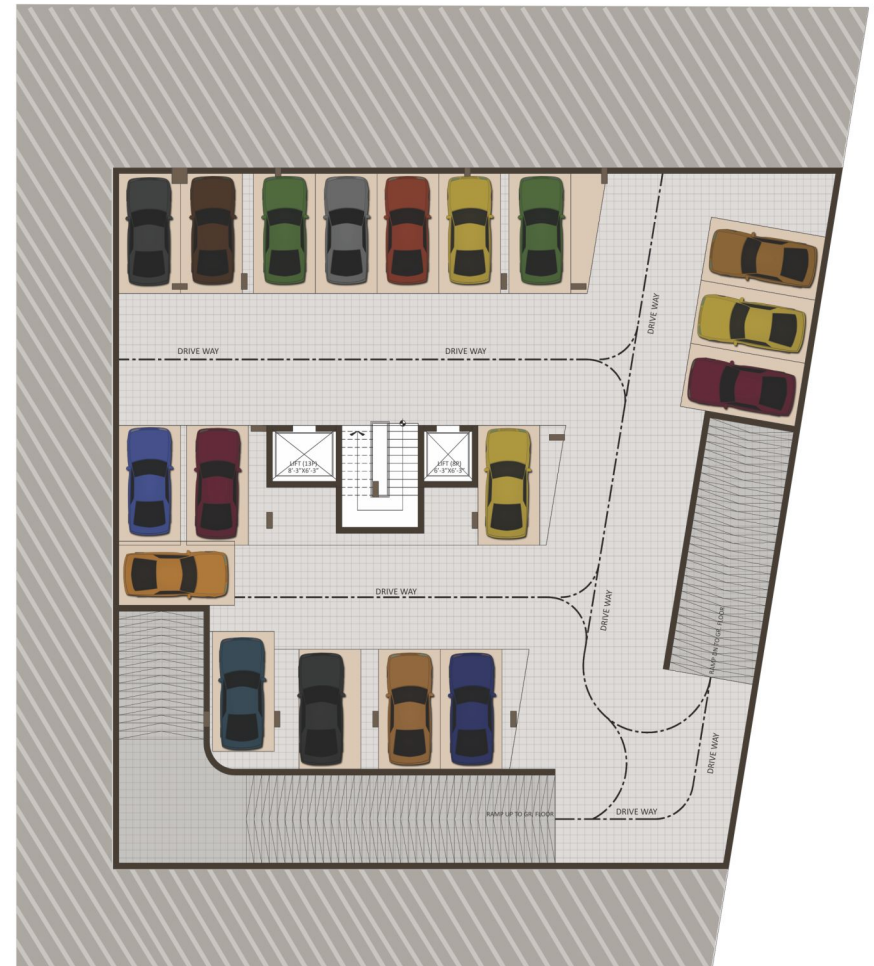
CORAL[®]
GROUP
Real Estate & Infrastructure
Project Developers



*B.U.A = S.B.U.A - 21.5%

BASEMENT PLAN

CORAL[®]
GROUP
Real Estate & Infrastructure
Project Developers



*B.U.A = S.B.U.A - 21.5%

TYPICAL FLOOR PLAN



AREA SCHEDULE

FLAT NO	TYPE	SALEABLE AREA (Sq.Ft.)
101	3 BHK	1500.00
102	2 BHK	1420.00
103	2 BHK	1135.00
104	2 BHK	1135.00

*B.U.A = S.B.U.A - 21.5%



2 BHK



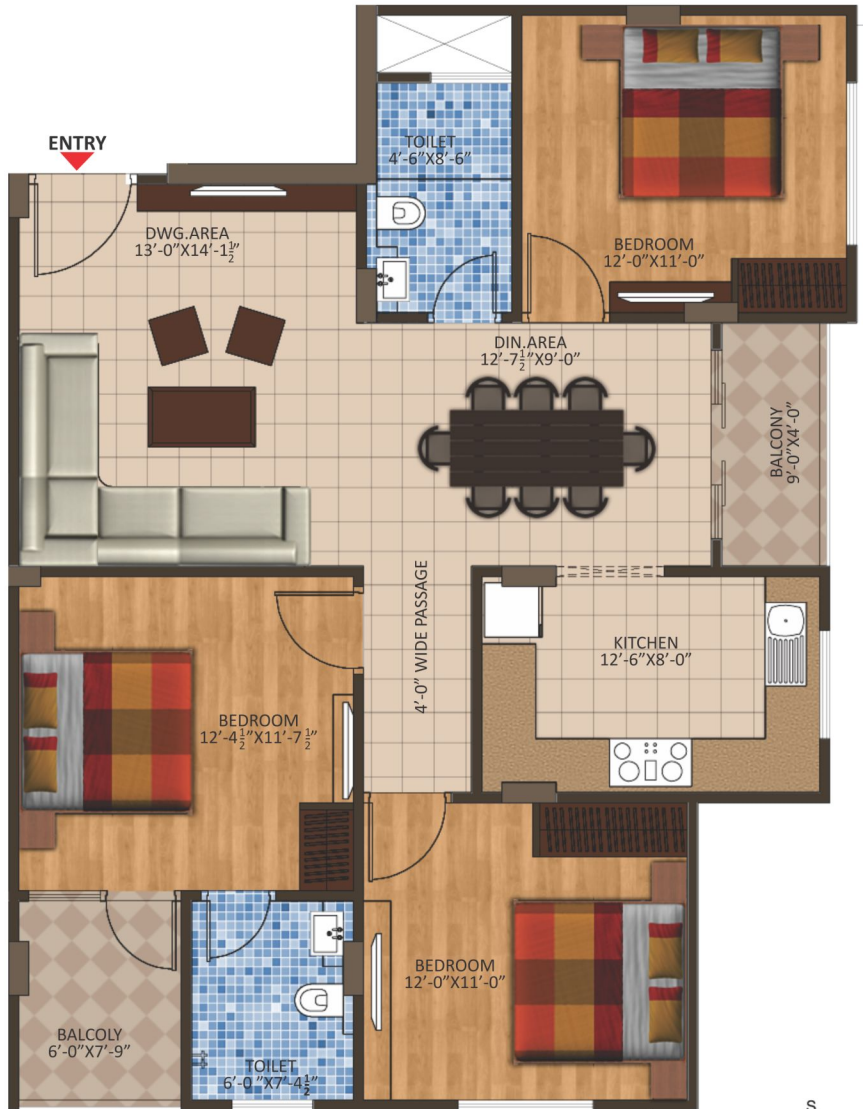
ENTRY

FLAT NO.	S.B.U.A.
103-1003	1135 SQ.FT
104-1004	1135 SQ.FT

*B.U.A = S.B.U.A - 21.5%



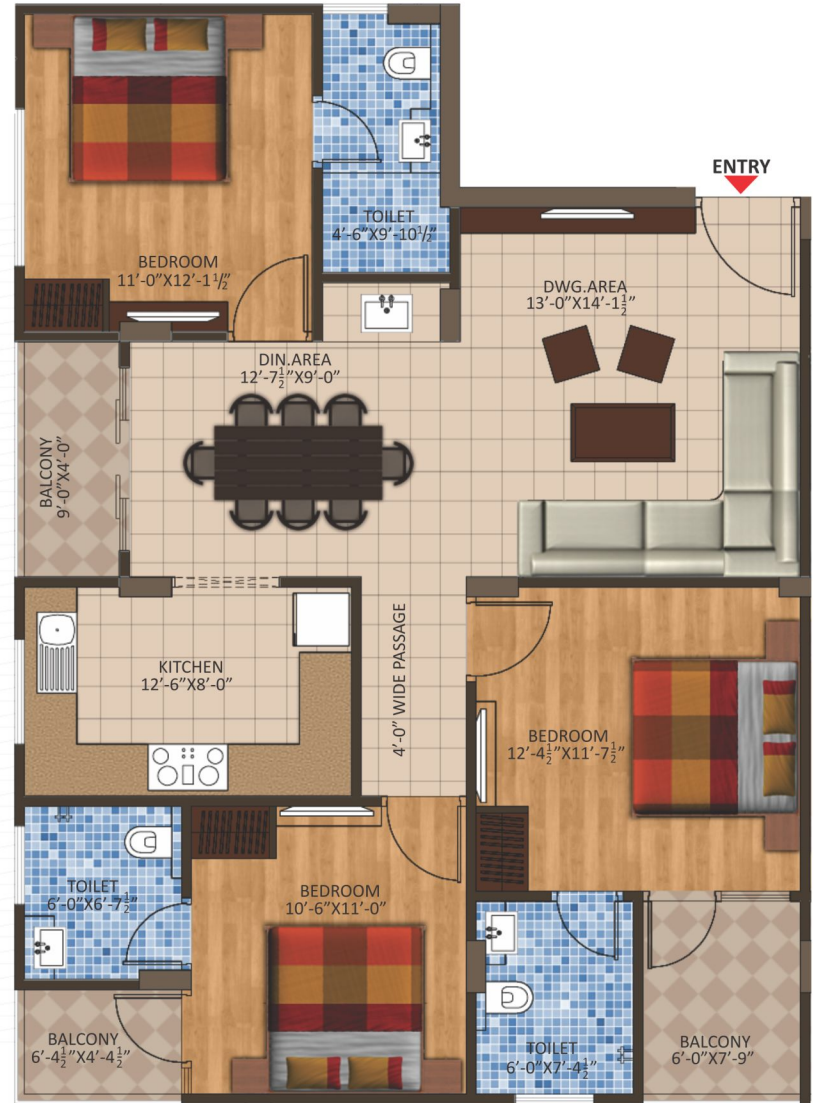
3 BHK



FLAT NO.	S.B.U.A.
102-1002	1420 SQ.FT



3 BHK



FLAT NO.	S.B.U.A.
101-1001	1500 SQ.FT

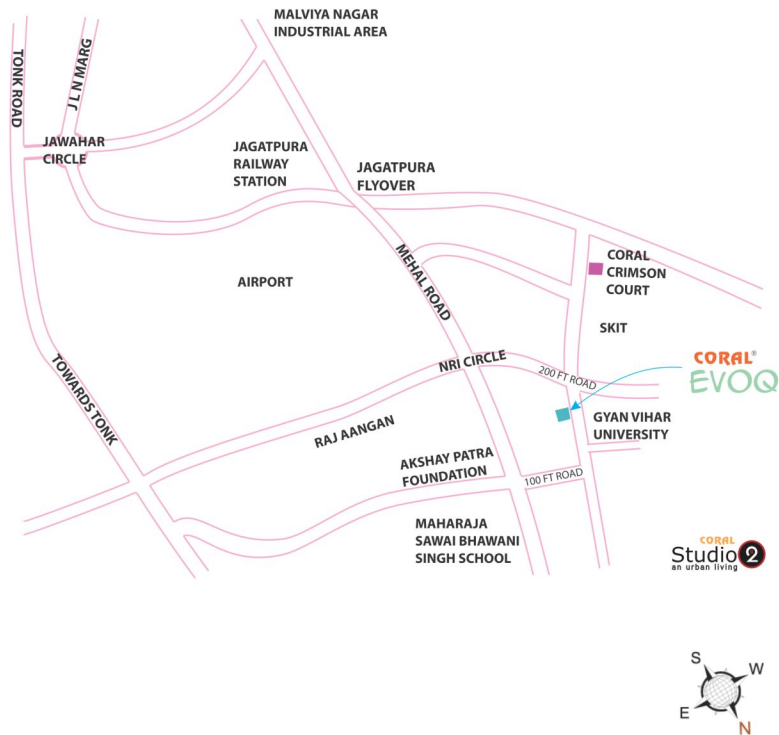


*B.U.A = S.B.U.A - 21.5%

*B.U.A = S.B.U.A - 21.5%

Located in the Vibrant Hub of Jagatpura, in close proximity of Jaipur Airport, the Business District Centers and Prime Educational Institutions, 5 Star Restaurants, Bars, Health Clubs, Laundry Services.

Evoq's upscale two and three bedrooms apartments have been crafted especially for those who want more. This location has everything at your doorstep .



Location Advantages

- 10 min drive to World Class Hospitals
- 10 min drive to Airport
- 10 min drive to Educational Institutes
- 15 min drive to Railway Station

Site Address : Near Gyan Vihar University, Jagatpura, Jaipur

ONGOING PROJECTS



Coral Arहत Heights
Patrakar Colony, Near
Mansarovar, Jaipur



Coral Radha Krishna
Green Triveni, Sikar Road, Jaipur



Coral Shubh Niwas
New Navratna Complex, Shrawana
Road, Udaipur



Coral Studio 2
Jagatpura, Jaipur



Coral Studio One
Sehkar Marg, Lal Kothi, Jaipur



Coral Soccer
Negenghi Road, Pawanpuri, Bikaner



Coral Czar
Budh Vihar, Alwar



Coral Golf Green
Near Air Force,
Golf Course Scheme, Ratanade, Jodhpur

CORAL®
GROUP
Real Estate & Infrastructure
Project Developers



Coral Dhamu
Patel Nagar, Bikaner



Coral Dhamu
Patel Nagar, Bikaner



Coral Eshwar
Old Shivbani Road, Bikaner



Coral Pune
Chakan Industrial Area, Pune

Coral Pune
Chakan Industrial Area

CORAL GROUP has created some of the most Innovative Residential Apartments in Jaipur, Jodhpur, Bikaner, Alwar & Udaipur and now marking its presence at Neemrana and Pune. It all started in the year 2000. Since then there has been no looking back. Coral ventures in the real estate Industry won tremendous Appreciation, Recognition, & Acceptability amongst the Realtors, Architecture fraternity & Corporate.

The Group today is known to create beautiful structures which are stunning to behold and marvelously executed to offer experiences of the most luxurious comforts.

The biggest strength of the organization is its most treasured possession. The trust of our customers, earned through years of hard work, genuine commitment & performance beyond expectations.

The Group is led by the people philosophy shaping the company's outlook and style. None of the projects are seen as an individual's pursuit, but a well-coordinated team effort. Coral has We have a dedicated team of well qualified & experienced Architects, Engineers, Supervisors, Structural Designers, Electrical Consultants & Manager meticulously converting each dream into a reality. Apart from the committed team Coral employs the finest technology, impeccable material, unparalleled designs & latest techniques available in the country.

Today "Coral Group" is a name to reckon with in the real estate industry of Rajasthan & is credited with a proven record of commitment in maintaining high standard of quality & ambiance in all its projects.

We at Coral are committed to deliver your dreams into reality!

UPCOMING PROJECTS