

**CORAL**<sup>®</sup>  
**GROUP**  
Real Estate & Infrastructure  
Project Developers


**CORAL**  
Golf Greens   
Quality Homes By Quality People  
2 / 3 BHK Premium Residential Apartments

Life..  
at every moment!





# Graceful Living



A whole new world is all set to rise and change the way people have lived all this while. Coral group brings, at the most sought after address at Sun City, an experience of living in the middle of green surroundings to the people of the Jodhpur. Coral Golf Greens, is located at Ratanada, the heart of Modern Jodhpur, in the green vistas of the Golf Course. It surely is an address with perfect connectivity to all major land marks and well surrounded by the happening places. Coral Golf Green is not just a housing project but it is the new way of living a suave and classic cosmopolitan lifestyle at Jodhpur. Replete with the finest features the homes are truly in a class of their own. Now green luxury walks through the gateway of Thar!



Quality Homes By Quality People  
2 / 3 BHK Premium Residential Apartments



# Delightful way of living



Classic and luxurious living style with comfort, lapped up in essence of the lush green environment & array of ornamental and florid trees, treat you to the beautiful and joyous moments of your cherished life. A look out of your window brings in an aura that tantalize your senses.

# Live in Style & Comfort



Playing Card Room



## CLUB HOUSE

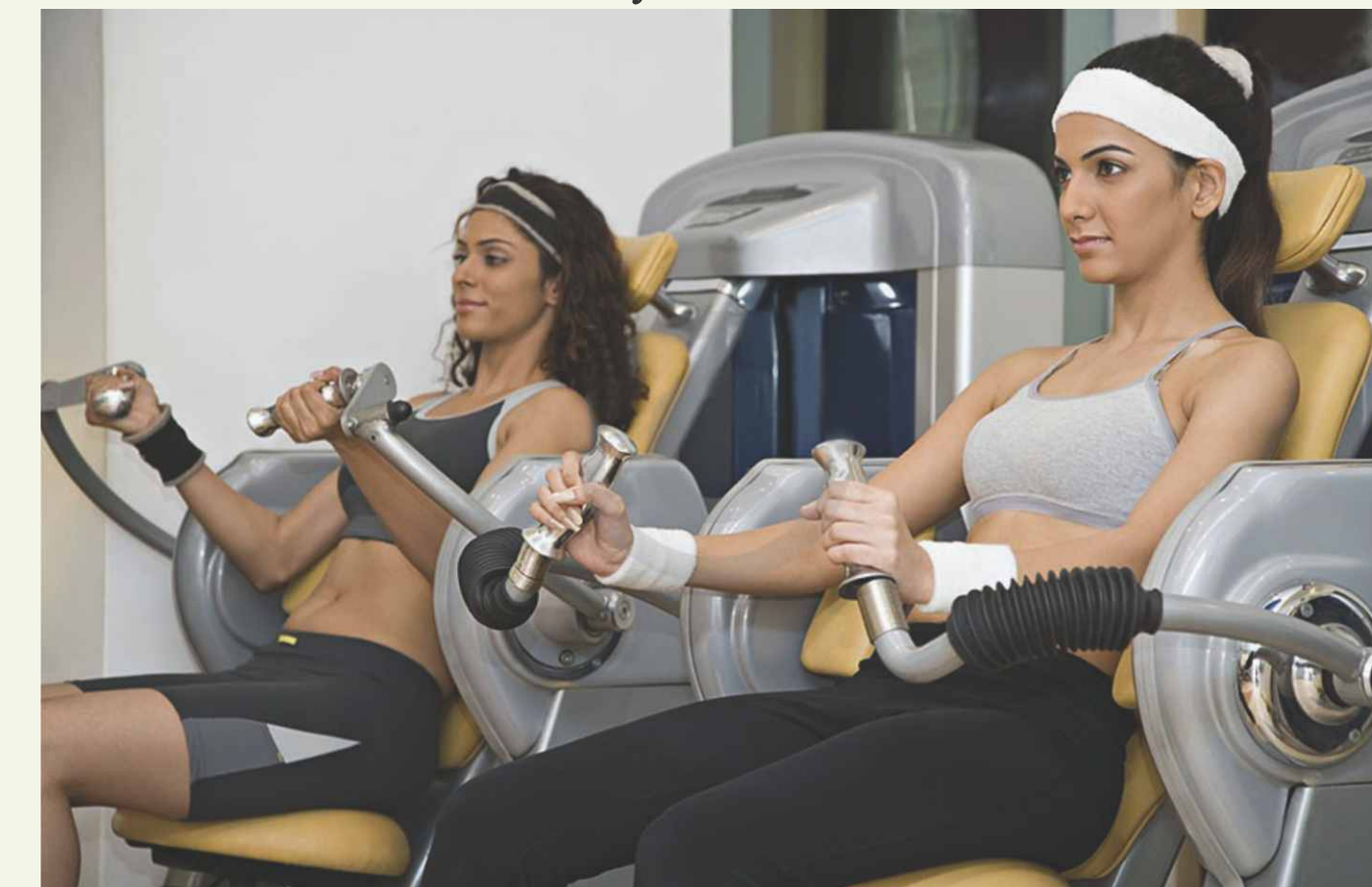
Pep up your spirits with club house that serves to spoil and pamper your senses, enliven your moods and soothe your mind.

Give yourself a gift of rejuvenation and relaxation!

Sauna & Steam Bath



Gymnasium



Carrom Room



Home Theatre



Enchanting  
Gift of  
rejuvenation  
in assorted  
shades

Swimming Pool





The premium apartments, with 24 Hours power backup, glitter every evening like the dazzling stars in the desert landscape. The well lit roads lead to the club house thronging with people immersed in activities.

The Well secured parameters, under constant vigil of the security personnel manning the high imposing gates of the residential complex, all geared to give the residents a comfortable and secure life.

Added to these are the enthralling amenities to enthuse life. Entertaining area for the kid's activities with provisions for enthralling indoor, outdoor games makes it a place for all.

The project of 70000 sq. ft. is spread over the area of 1035, 1080, 1105, 1450, 1630 sq. ft. It promises to be a pleasant memory, cherished forever.

**2 / 3 BHK Premium Residential Apartments**



Map not to scale

**Location Advantages**

- 3 Min. Drive from Airport
- 5 Min. Drive from Railway Station
- 5 Min. Drive from Sardarpura
- 2 Min. Drive from MBM Eng. College
- 3 Min. Drive from Medical College



## Specifications

### Building Features

- Dedicated Parking
- Club House
- Smart Building design
- Artistically designed Entrance Lobby
- Rain water harvesting
- Earthquake resistant Structure
- High Speed Elevators

### The Club House

- Steam and Sauna Bath
- Chess Room
- Carrom Board Room
- Playing Cards Table
- Gymnasium
- Home Theater
- Table Tennis
- Swimming Pool

### Indoor Specifications

- Naturally lit and well ventilated rooms
- Vitrified Tiles Flooring in Living/dining & Kitchen
- Ceramic Flooring in Utilities and Balconies
- Flush door and UPVC/Aluminium Windows
- Smooth POP finish with premium Distemper
- Provision for Broadband internet Connectivity

### Bathroom And Toilets

- Anti Skid Ceramic Flooring • 7 ft. high Designer Tiles cover
- International Standard Sanitary and CP Fittings

### Kitchen

- Granite Platform with single Bowl
- Stainless Steel Sink
- 2 ft. high Glazed Tile Cover above the Platform

### Security

- 24x 7 Security
- Visitor Entry on Visitors Card only
- Fully Equipped Fire fighting system
- Surrounded by Compound wall

### Electrical

- Concealed Copper Wiring
- Indoor MCB Unit
- Washing Machine Point
- AC Point in all rooms
- Adequate light point with modular switches

### Utilities

- 100% power Backup for common areas and elevators
- Name board and private mail box



## Stilt Floor Plan



\*B.U.A = S.B.U.A - 23%

Typical Floor Plan  
First To Seventh Floor



**AREA SCHEDULE**

FLAT NO	TYPE	SALEABLE AREA (Sq.Ft.)
101	3 BHK	1630.00
102	2 BHK	1080.00
103	2 BHK	1080.00
104	3 BHK	1630.00
105	3 BHK	1450.00
106	3 BHK	1450.00
107	2 BHK	1035.00
108	2 BHK	1105.00

\*B.U.A = S.B.U.A - 23%

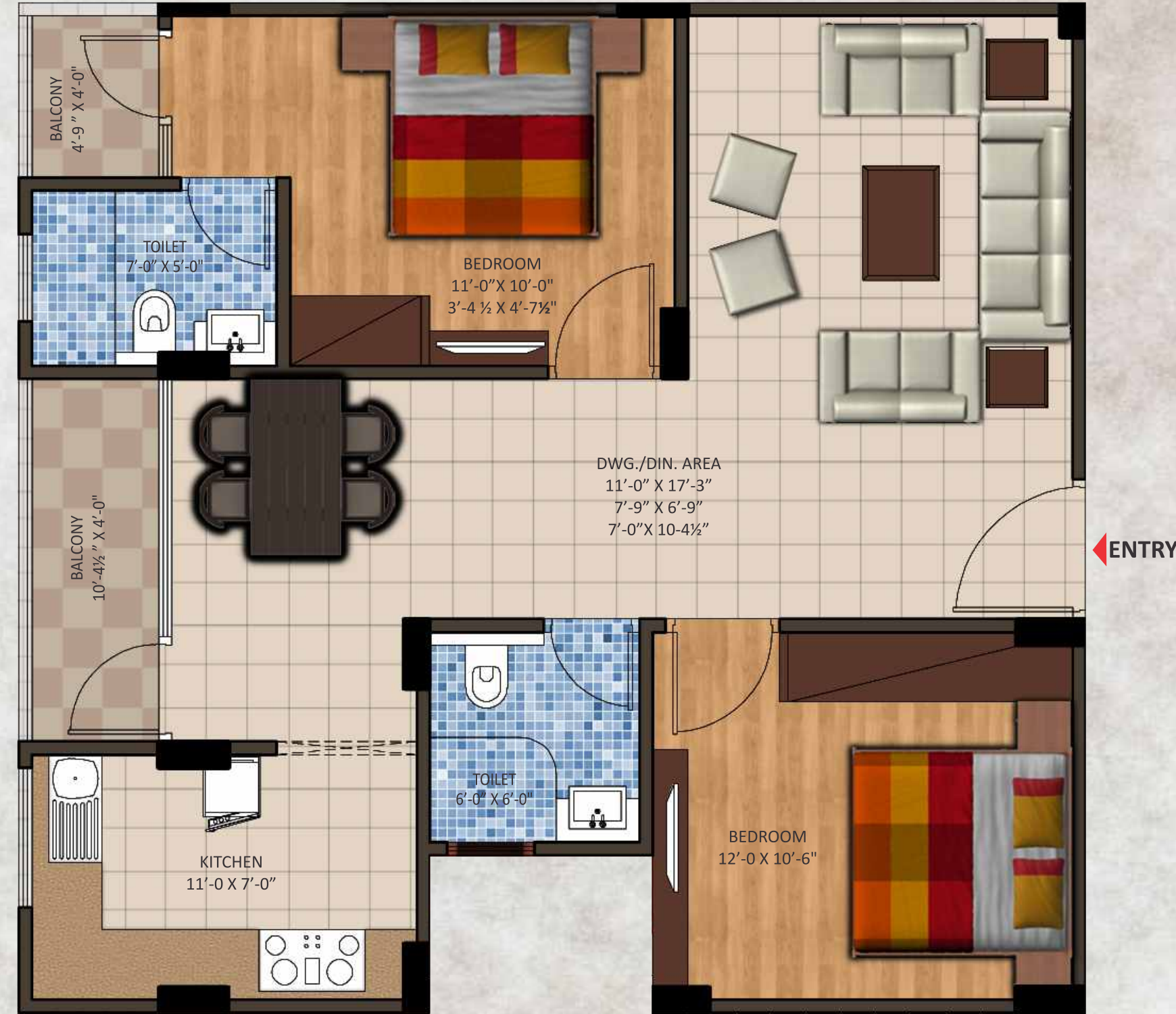
2 BHK



TYPE B	S.B.U.A.
2 BHK	1035 SQ.FT

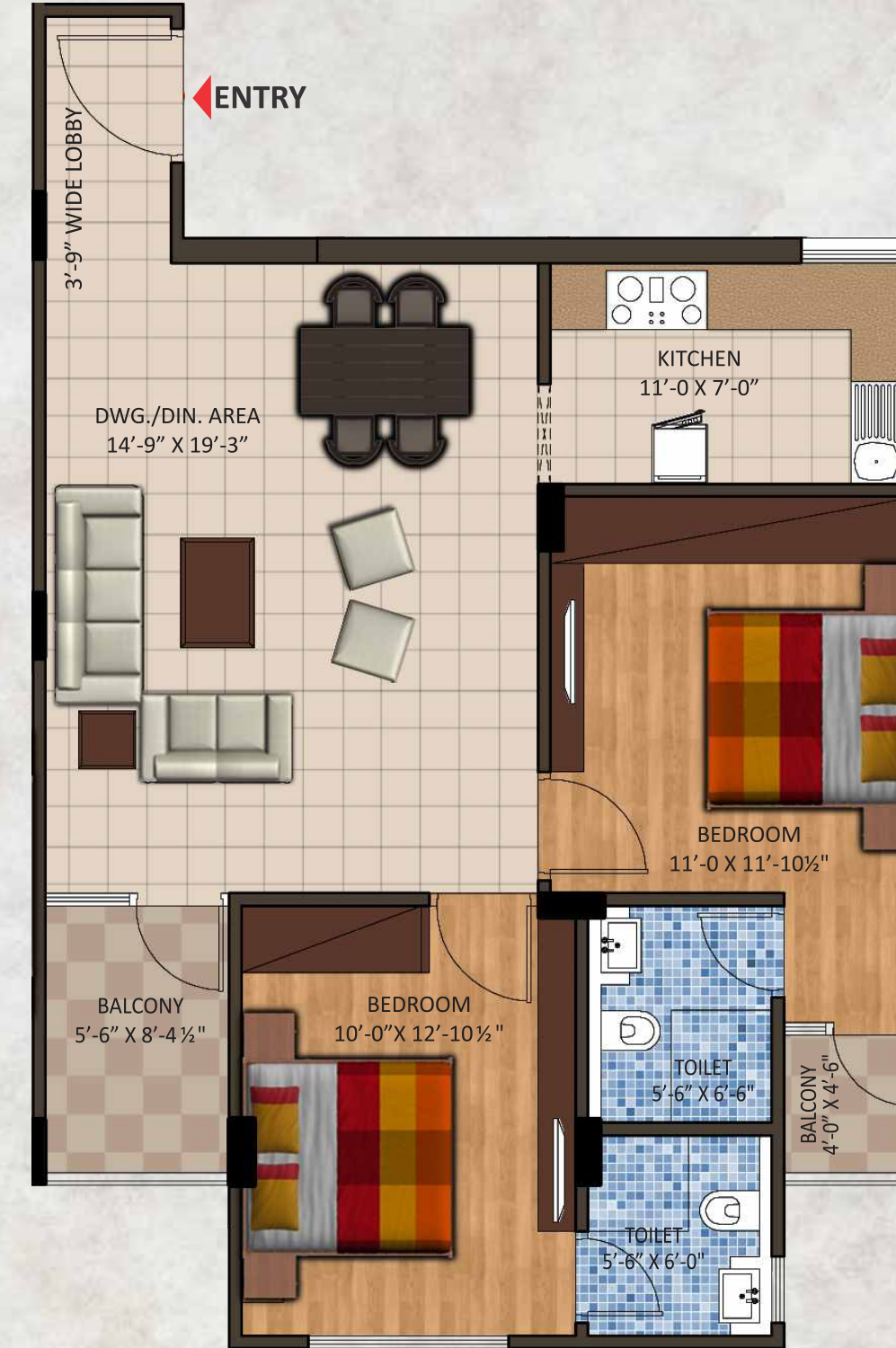
\*B.U.A = S.B.U.A - 23%

2 BHK



TYPE C	S.B.U.A.
2 BHK	1105 SQ.FT

2 BHK & 3BHK



TYPE A	S.B.U.A.
2 BHK	1080 SQ.FT



TYPE A	S.B.U.A.
3 BHK	1630 SQ.FT



3 BHK



TYPE B	S.B.U.A.
3 BHK	1450 SQ.FT

3 BHK



TYPE B	S.B.U.A.
3 BHK	1450 SQ.FT

# Coral Projects

## ONGOING PROJECTS



Coral Arihant Heights  
Patrakar Colony, Near  
Mansarovar, Jaipur



Coral Radha Krishna  
Green Triveni, Sikar Road, Jaipur



Coral Studio One  
Sehkar Marg, Lal Kothi, Jaipur



Coral Crimson Court  
Near SKIT Jagatpura  
Jaipur



Coral Evoq  
Near Gyan Vihar, Jagatpura, Jaipur



Coral Soccer  
Negenghi Road, Pawanpuri, Bikaner



Coral Shubh Niwas  
New Navratan Complex, Bhuwana  
Road, Udaipur



Coral Czar  
Budh Vihar, Alwar



Coral Studio 2  
Jagatpura, Jaipur

## UPCOMING PROJECTS



Coral Eshwar  
Old Shivbari Road, Bikaner



Dhamu's Coral  
Patel Nagar, Bikaner



Premium Residential  
Apartments,  
Pune



CORAL  
CITY  
WORLD WITHIN YOUR REACH  
© Neemrana

**CORAL**<sup>®</sup>  
**GROUP**

CORAL GROUP has created some of the most Innovative Residential Apartments in Jaipur, Jodhpur, Bikaner, Alwar & Udaipur and now marking its presence at Neemrana and Pune. It all started in the year 2000. Since then there has been no looking back. Coral ventures in the real estate Industry won tremendous Appreciation, Recognition, & Acceptability amongst the Realtors, Architecture fraternity & Corporate.

The Group today is known to create beautiful structures which are stunning to behold and marvelously executed to offer experiences of the most luxurious comforts.

The biggest strength of the organization is its most treasured possession. The trust of our customers, earned through years of hard work, genuine commitment & performance beyond expectations.

The Group is led by the people philosophy shaping the company's outlook and style. None of the projects are seen as an individual's pursuit, but a well-coordinated team effort. Coral has We have a dedicated team of well qualified & experienced Architects, Engineers, Supervisors, Structural Designers, Electrical Consultants & Manager meticulously converting each dream into a reality. Apart from the committed team Coral employs the finest technology, impeccable material, unparalleled designs & latest techniques available in the country.

Today "Coral Group" is a name to reckon with in the real estate industry of Rajasthan & is credited with a proven record of commitment in maintaining high standard of quality & ambiance in all its projects.

We at Coral are committed to deliver your dreams into reality!



**CORAL GROUP**  
Real Estate & Infrastructure  
Project Developers

Corporate Office : Coral Castle, E-92, Subhash Marg, C-Scheme, Jaipur  
Ph : +91 141 2222153, 2222156, 2221747 E - Mail : [marketing@coralgroup.co.in](mailto:marketing@coralgroup.co.in)

Our Presence : JAIPUR | JODHPUR | BIKANER | UDAIPUR | ALWAR | NEEMRANA | PUNE  
[www.coralgroup.co.in](http://www.coralgroup.co.in)

Customer Care No. : 1800-200-5812

Designed by bfc